

BUILDING FOR THE FUTURE

Western General Hospital Site Works
Update: Autumn 2023

This newsletter provides an update on the projects being undertaken across the Western General Hospital (WGH) site. It is part of a series of newsletters for the local community.

Update on current works

Linear Accelerator (Linacs) Bunkers: A new specialist radiotherapy machine (Linac) has been installed following completion of the fit out of the first bunker. The Linac will now undergo a period of intensive testing and validation. It is expected to be providing treatment for cancer patients in Spring 2024. This latest machine will help the radiotherapy service to meet increased patient demand and provide essential treatments which can destroy cancer cells.

New Cancer Assessment Unit: Work to provide a new Cancer Assessment Unit (CAU) within the existing building is almost complete. A new air handling unit was successfully installed over the summer. The CAU is due to open in winter and will provide an easily accessible, modern, fit for purpose unit for patients and staff.



Example Linear Accelerator (Linac) for illustration purposes.

Improvements to existing cancer wards: Work is ongoing to refurbish inpatient cancer wards 2 to 4 within the Edinburgh Cancer Centre, including the inpatient chemotherapy treatment area. Construction in ward 4 is complete and is now occupied by CAU temporarily until the new CAU accommodation is complete. Work has now started in wards 2 and 3 and will continue into the new year. Once complete they will provide more comfort, space and privacy for patients and staff.

Energy Infrastructure Works

The demolition of the redundant laundry building, where the new energy centre is planned for construction will be completed in 4 phases with the following estimated timelines:

- Phase 1: Enabling & Separation – 28 weeks
- Phase 2: Structure – 17 weeks
- Phase 3: Debris Removal – 16 weeks
- Phase 4: Boiler House Over-cladding – 12 weeks

Phase 1 started in September and involves the separation of the Laundry Building from the attached Main Boiler House building. This work is being carried out internally so will have minimal impact for neighbours and the remaining building.

Planning Updates

Three proposals have been submitted to the Scottish Government including an Initial Agreement for a new regional specialist cancer facility and a proposal to improve critical care facilities at the Western General Hospital. The third proposal is a decant and demolition plan to address empty facilities that are no longer fit for purpose to give the site much needed development space. These are being reviewed as part of the Scottish Government's wider funding and project sequencing review, which encompasses a number of capital projects across the Scottish Health Estate.

Success

National Cancer Strategy: We welcomed the Minister for NHS Recovery, Health and Social Care, Michael Matheson to the Edinburgh Cancer Centre during the summer to mark the launch of the Scottish Government's new Cancer Strategy. During his visit Mr Matheson toured Radiotherapy Services. He also met staff and patients piloting a new, innovative, Single Point of Contact service to help improve the patient experience and ensure staff can focus on delivering the best care.



Reducing Carbon Emissions: A team of environmentally conscious anaesthetists at the Western General Hospital have been leading work to [significantly reduce carbon emissions](#). By replacing the use of harmful medical gases in theatres with eco-friendlier alternatives and improving working practices they've reduced emissions by 25% saving hundreds of tonnes from being released annually and helping us work towards net zero. The team were [honoured](#) for their work in tackling climate change by the Chair of NHS Lothian at the recent Celebrating Success Awards.



Staff Honoured at Awards: We were proud to also have several other winners at NHS Lothian's [Celebrating Success Awards](#) from the Western General Hospital. Those recognised include the Same Day Emergency Care Team for their work helping patients get the right care in the right place and reducing A&E waiting times; Kirsten Smith, won the Nurse of the Year award and Zakariya Vansoh won the Voluntary Service Award.

Other News

Volunteering: We're thankful to the large number of volunteers who donate their time to helping us at the WGH. Volunteers are an amazing resource for our staff, donating thousands of hours to help us provide the best patient care. Last month 220 volunteers donated, 2609 hours, over 265 placements. We also welcomed 10 new volunteers. Anyone interested in finding out more can visit nhslothian.scot/getinvolved/volunteering-opportunities or [email volunteer.enquiries@nhslothian.scot.nhs.uk](mailto:email.volunteer.enquiries@nhslothian.scot.nhs.uk)

Radiotherapy Services: [Services are operating as normal](#) following work to eliminate Legionella bacteria in water supplying parts of the treatment area which was detected during routine testing. Action to quickly isolate the water source and remove, replace and clean affected areas meant a full return of services was completed promptly. Essential patient care continued to be provided in non-affected areas, resulting in no delays to patient waiting times while maintenance took place.

Greenspaces: As part of the ongoing energy and infrastructure works improvements have been made to Amanda's Garden at the Western General Hospital which provides a peaceful, natural haven for patients. NHS Lothian Charity's [FACE Garden](#) (Fighting Against Cancer Edinburgh) has also recently been spruced up thanks to the hard work and dedication of many budding volunteers.

Parking: We aim to be a good neighbour and expect all our staff to comply with local parking regulations and restrictions. We issue regular communications to remind staff about our sustainable transport policy and the availability of cycling stores or on-site parking for those who need it. We continue to retain the former Royal Victoria Hospital Site, located off Craighleith Road, for staff with permits as well as providing a construction compound.

Contact us

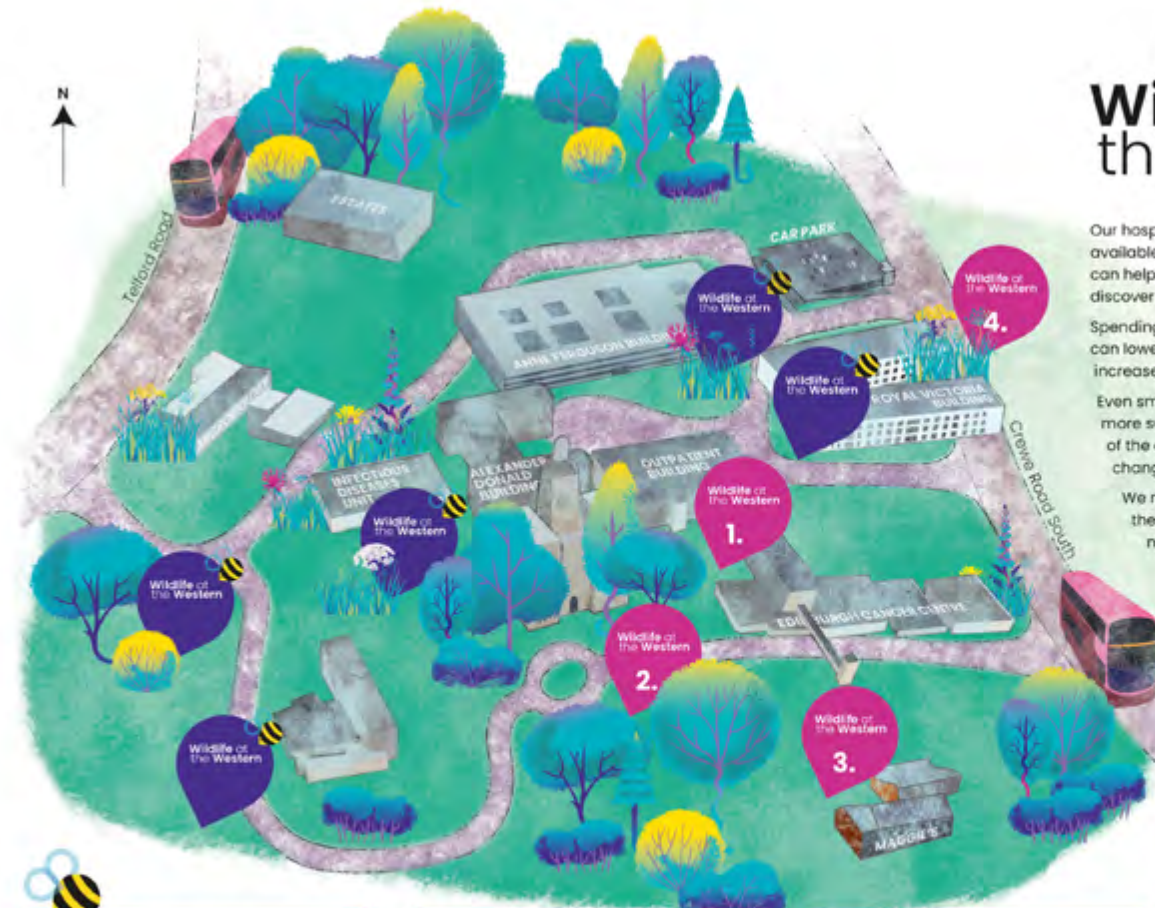
We would like to thank our neighbours and the local community for their patience and understanding throughout the redevelopment programme. We apologise for any inconvenience caused during these essential construction works, which are managed within the requirements of the Considerate Constructors Scheme to minimise disruption.

If you have any questions regarding the redevelopment programme, please email: loth.wghcommunications@nhslothian.scot.nhs.uk

You can also find more information by visiting our website: www.nhslothian.scot/WGHfuture

Future Work

Arts and Greenspaces: We are working collaboratively with our NHS Lothian Charity colleagues, Tonic Arts, to improve our internal and external spaces. As part of this, NHS Lothian Charity have worked with our Grounds and Gardens team to create this map of the beautiful and therapeutic spaces around the hospital for patients, visitors and staff to explore.



Wildlife at the Western



Our hospital has different kinds of greenspaces that are available for patients, visitors and staff to use. This map can help you find some of them but there are lots more to discover when you start looking.

Spending even ten minutes outside in one of these gardens can lower our stress levels, boost our immunity and increase our focus.

Even small spaces help to make our cities greener and more sustainable places to live. Trees improve the quality of the air we breathe, reduce the impact of climate change and provide a vital habitat for wildlife.

We need nature as our neighbour for our health and for the health of the planet. If we nurture nature it will look after us too.

Go explore! For more information scan the QR code.



Pollinator patches

Our Grounds and Gardens team have planted these patches with native wildflowers to attract bees and butterflies. These insects transport pollen to make seeds that grow the food we eat. One third of our crops depend on pollinators so it is vital we create more habitats for them.

1. The FACE Garden

Created by dedicated volunteers who support NHS Lothian Charity's 'Fighting Against Cancer Edinburgh' fund, this garden provides a place to breathe just a stone's throw from the busy outpatient services. The water feature and natural planting create a soothing environment and food for birds and bees.

2. Amanda's Garden

This peaceful contemplative garden is surrounded by mature trees and is a haven from the hustle and bustle of the hospital. With lots of seating, it is an ideal place to take a break surrounded by nature in a calm and tranquil environment. The trees here help absorb carbon, clean the air and create homes for wildlife.

3. Maggie's Garden

The friendly welcoming garden at the Edinburgh Maggie's centre is open to all and is full of colour year-round. The sculpture by George Rickey sways in the wind to look like the movements in Tai Chi. The garden is an extension of the kitchen table to allow people to sit outside and connect with each other.

4. Royal Victoria Building Garden

This garden in the heart of the Royal Victoria Building is for patients and staff using the six medicine for the elderly wards. It overflows with ox-eye daisies in the summer months. Important pollinators like bees, butterflies, moths and insects love these large wild flowers. They also provide food for caterpillars and seeds for birds.



1 R.I.D.U | Department of Infectious Disease

Wards : 41 - 43

2 A.D.B | Alexander Donald Building

Wards : 20, 22 - 27

3 A.F.B. | Anne Ferguson Building

Wards : 50 - 58

4 O.P.D. | Outpatient Department Medical Assessment Unit

5 C.T.B. | Clock Tower Building

Wards : 11 & 15

6 R.V.B. | Royal Victoria Building

Wards : 70 - 75

7 E.C.C. | Edinburgh Cancer Centre

Wards : 1 - 8

8 R.D.B | Renal Dialysis Building

9 Inverleith Building



Western General Hospital Patient and Visitor Map

Map Key

Patient Entrance		Shop		Bus Stop	
Car Park		Cafe		ATM	
Vehicle Entrance		Taxi and Dropoff		Public Bicycle Parking	
One Way					