

New Linear Accelerators & Admin

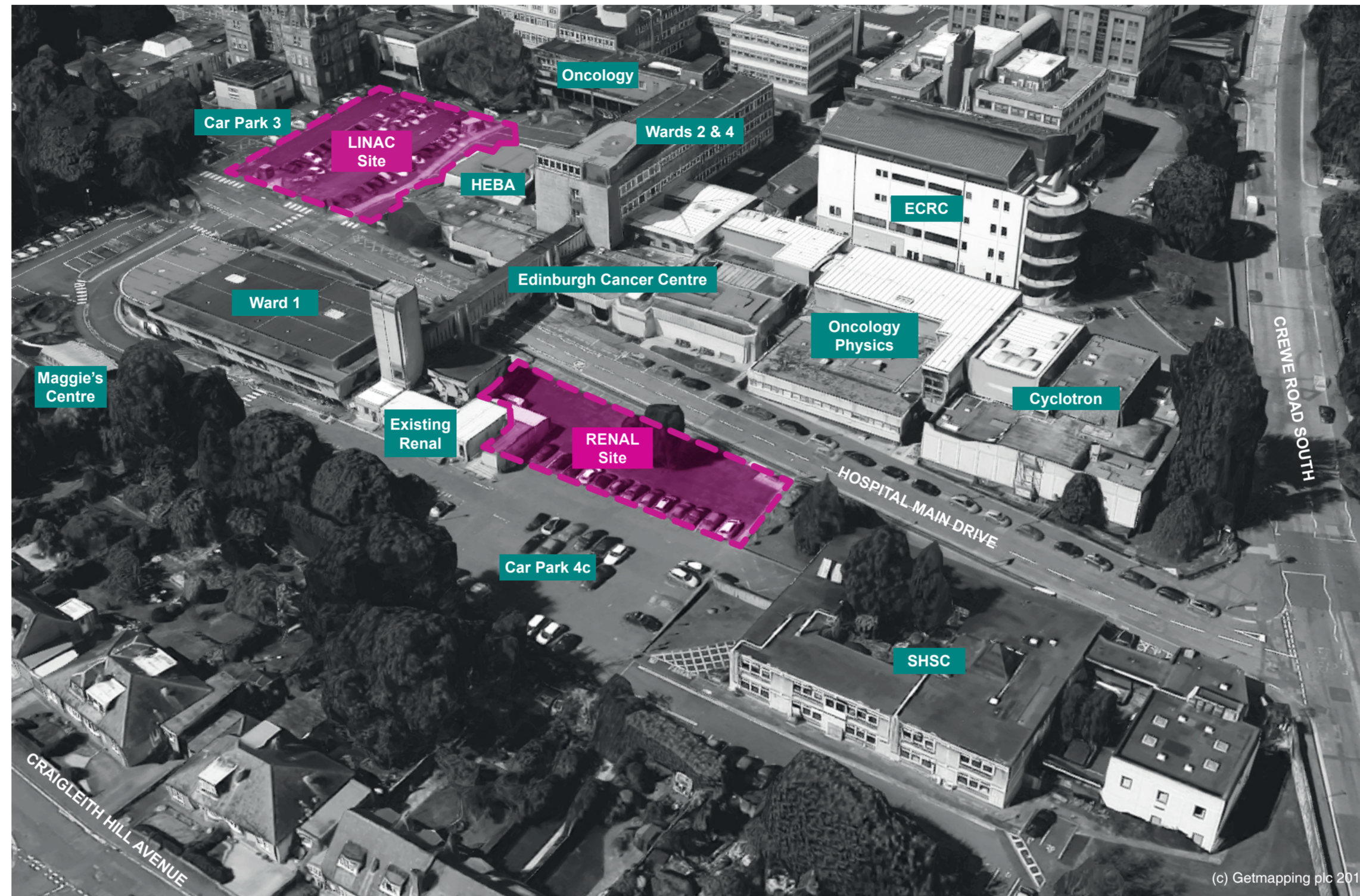
Both the Linear Accelerator Capacity Development and the Re-provision of Displaced Oncology Office Space are envisaged to be provided in a single new development located adjacent to the existing buildings within Car Park 3.

The objective of this regional project is to :

- Provide bunker and LinAc capacity in a way which allows demand and capacity to be matched over the next 10 years,
- Provide additional bunker capacity to allow a) LinAc replacement and b) LinAc expansion as required by the service,
- Provide bunker and LinAc capacity in a way which supports safe, high-quality, and sustainable service delivery,
- Fit with the Cancer Capital Programme for the Western General Hospital, supporting a transition to a new ECC.

The benefits, which will be realised from providing a future increase in capacity, are:

- Minimal disruption to service provision when a Linac is being replaced,
- Additional bunker capacity to future proof ECC until a new cancer centre is opened,
- Minimal impact for patients as the Linac Bunkers will be easily accessible from the main Radiotherapy department,
- Minimal impact on staffing costs as the bunkers will be in close proximity to the main Radiotherapy department.



Aerial View of the WGH Site

Re-Provision of Renal Services

The Renal Dialysis service at WGH is currently located to the edge of central campus within extended modular accommodation which is now some 30 years old. The current 9 dialysis bays will be replaced with a new, fit for purpose, and dedicated building which will address current and projected demands of the Renal service provided at the WGH.

The aims of the unit are:

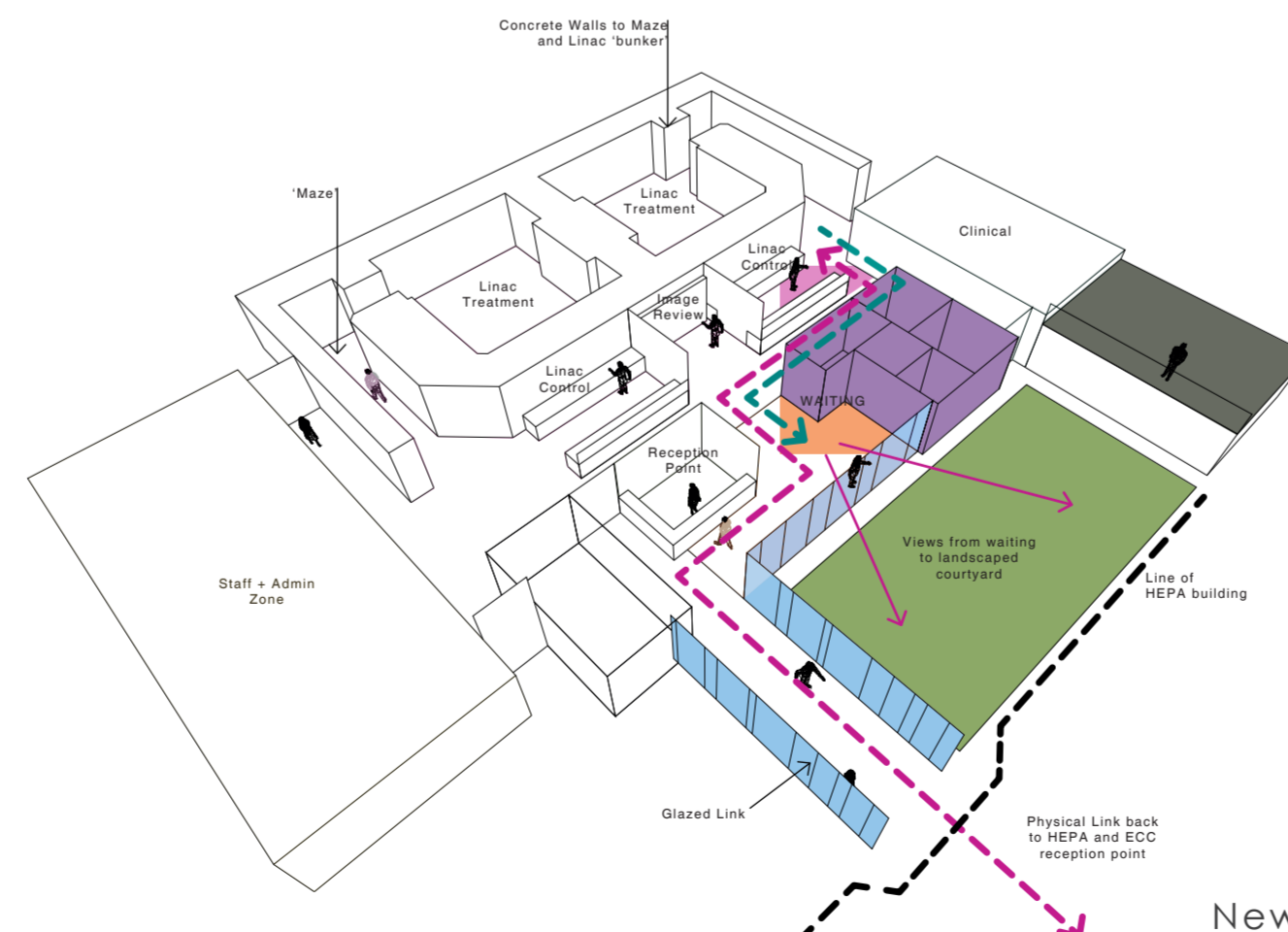
- To provide individual and personalised care, treatment and support,
- To provide a safe and effective treatment programme delivered by skilled and caring staff,
- To provide appropriate haemodialysis facilities for 'satellite-fit' patients with end-stage renal failure, wishing haemodialysis – providing mainly for, but not exclusively for, patients resident in North Edinburgh and surrounding catchment areas extending to South Queensferry.

The new renal unit will:

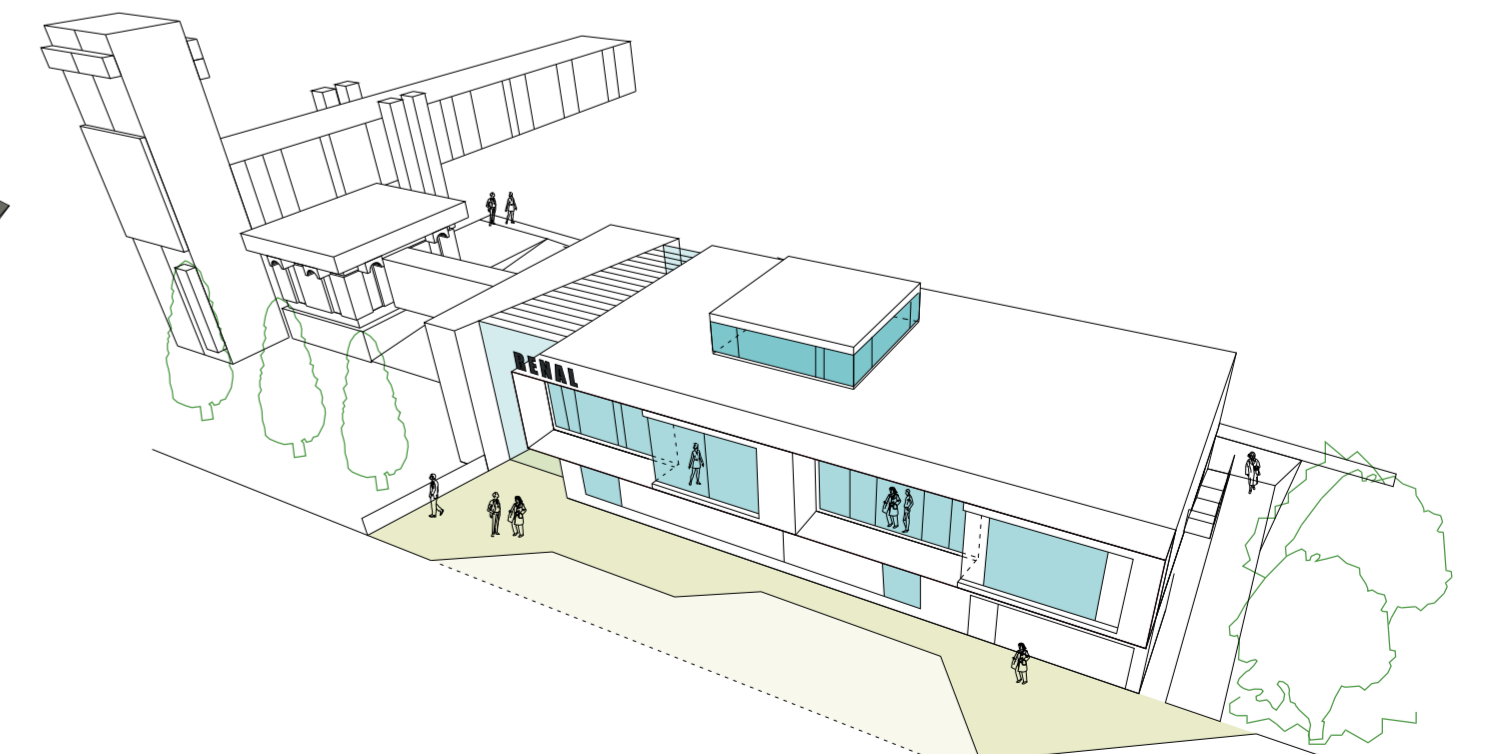
- Provide a modern fully compliant 12 station Dialysis Unit,
- Accommodate two 4 station treatment bays and 2 isolation rooms,
- Have designated Dialysis Patients' car parking spaces immediately adjacent to the Unit,
- Have its own dedicated entrance.



New LinAc & Admin Unit



New LinAc



New Renal Unit

