

## New Clinical Trials

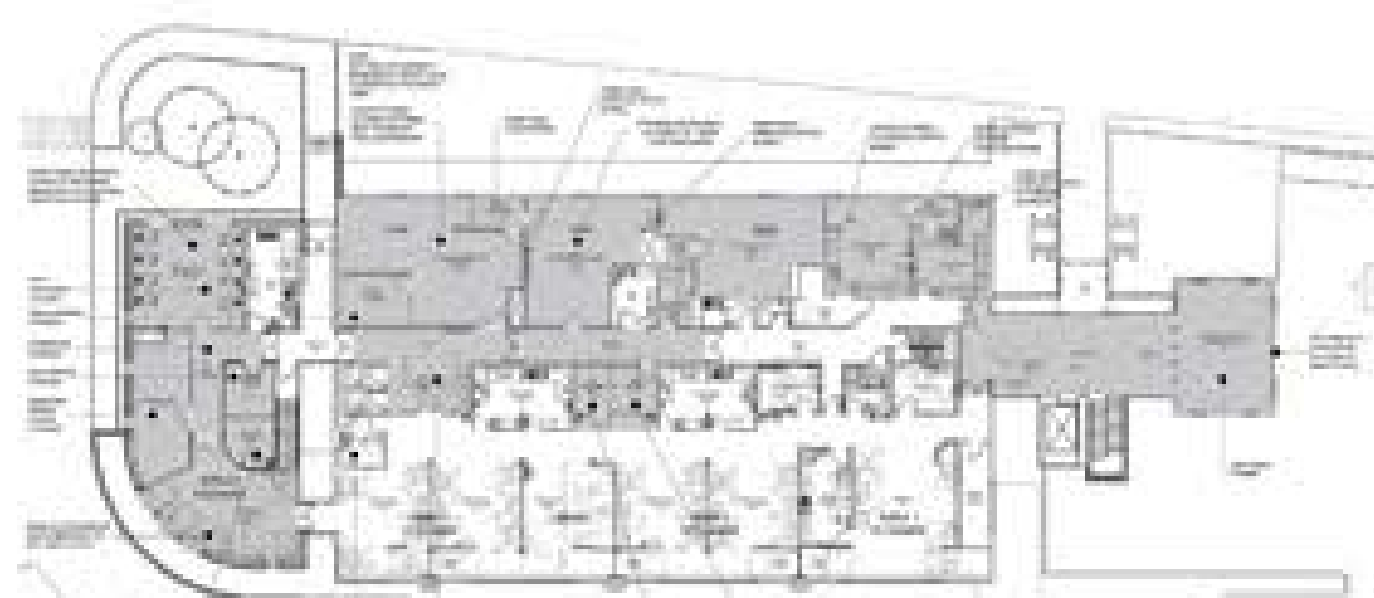
A feasibility study to explore options to create a new clinical trials facility with a focus on increasing capacity, promoting cross-speciality research and providing high quality training is underway.

## Oncology Refurbishment Works

### Ward 1

Refurbishment of Ward 1 is part of a phased approach to expanding and upgrading both pharmacy and oncology day case Systemic Anti-Cancer Therapy (SACT) facilities.

This initial project will see an expansion and upgrade to the pharmacy facilities, the redesign of SACT delivery and additional improvements to the main entrance area.



Ward 1

## Oncology Refurbishment Works

### Cancer Assessment Unit (CAU)

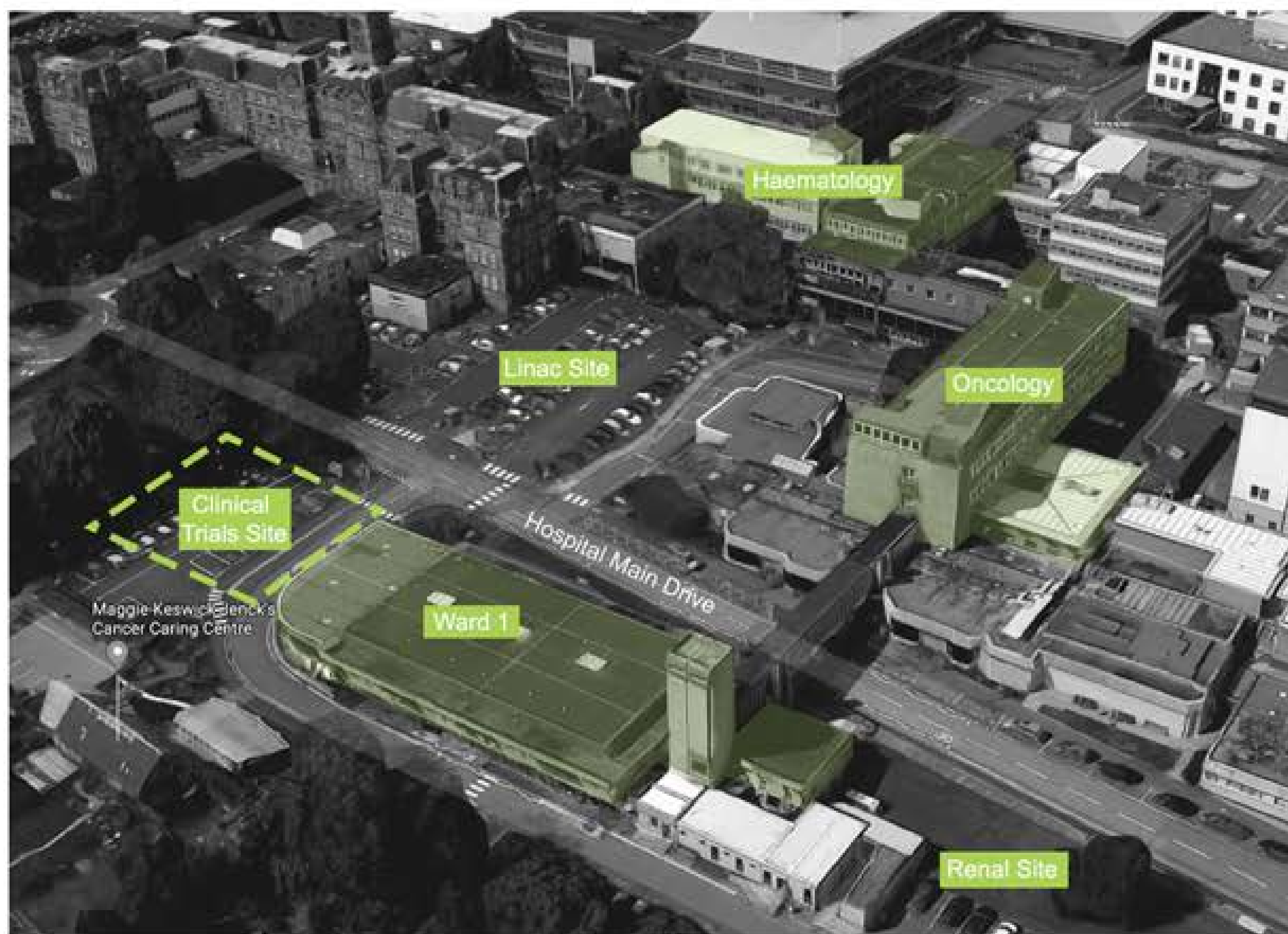
The completed redesign and provision of a new Cancer Assessment Unit is focused on providing modern facilities for the service of oncology and haematology outpatients who require emergency medical care and assessment.

The benefits will include:

1. More efficient and modern facilities capable of supporting the delivery of current and predicted future service demand.
2. An enabling of the upgraded radionuclide therapy rooms.

### Inpatient Wards (Wards 2 & 4)

The refurbishment of these two wards aims to provide upgraded facilities to meet modern standards in healthcare.



Aerial View of the WGH Site



Haematology



Ground Floor - CAU



First Floor - Ward 2



Second Floor - Ward 4

## Haematology

The complete refurbishment, upgrade and expansion of haematology will provide sophisticated and modern facilities, creating the best possible environment within the existing building for both patients and staff. The areas will include the following:

1. Day Unit - The expansion will not only provide improved facilities but also additional rooms such as an area where patients can sit while waiting for results. This will provide a more pleasant environment for patients and a more efficient clinical service.
2. Inpatient Facilities - The inpatient upgrade will be made suitable for patients at highest risk of infection, provide sufficient ancillary facilities and high quality staff areas. All bedrooms will become en-suite single rooms and be fit-for-purpose.
3. Expanded Day Unit - It is proposed that this area be developed as a new Extended Day Unit (open 12 hours per day, 7 days per week).

The redesign will take full advantage of the views provided from Ward 8, with panoramic aspects to the south of Edinburgh including Edinburgh Castle and the Pentland Hills. The interior design will be of a high specification and high level of interior design so that the internal environment matches the level of clinical service and care already being delivered.

