

Testing in care homes

Testing in care homes: What does the guidance say?

May 20, 2020

- Care homes report all cases
- HPT will advise on need for testing of residents and staff
- PCR positive cases in complex settings referred must be referred to the specialist health protection team staff for follow-up and not managed as part of contact tracing in the pilot phase.

May 1st

- Enhanced Outbreak investigation

April, 21st:

- Test all admissions to care homes

Previous guidance

- Test initial case & up to 5 to confirm outbreak

Now we have the increasing testing capacity, we will make it happen as swiftly as practicable.”

- All staff and residents in care homes will be routinely tested where cases of the virus have been identified.
- In addition where staff work between homes run by the same operator testing will also take place in those homes.
- Test new staff
- Surveillance testing will also take place in care homes without cases of the virus. A sample of residents not displaying symptoms will be tested to track the spread of COVID-19

Testing in care homes

Residents

- 2773 tests since 11/3/20
- All symptomatic since 17/4/20
- From 92% care homes for older people
- 1st positive on 17/3/20
- 917 positive
- 56% homes had cases

Staff

- 1004 tests since 23/04/20
- 216 positive

Rationale & approach

- Multiple care homes with ongoing and emerging outbreaks

Aim

- The control of outbreaks in care homes and other shared residential settings with a single or multiple confirmed cases of COVID19 in Lothian.

Approach

1. Risk assessment through multiagency problem assessment group (PAG)
2. Support for an effective Infection Prevention and Control Team (IPCT) and staffing levels.
3. Staff and resident testing, tracing isolation and support
4. Partnership working (public health, HSCPs, Local Authorities, Occupational Health, Chalmers, care home/prison/setting management and others)

Prioritisation and targeting

- **Outbreak:**
new/emerging; explosive; large ongoing; complex
- **Population tested:**
Asymptomatic staff
Asymptomatic residents if indicated for outbreak control
Symptomatic staff & residents are already tested
- **Incremental process:**
On going - Staff test & identify household contacts. Inform & advise
Planned - Staff test & identify and contact all contacts. Inform & advise

Reason for Enhanced Outbreak Response

Reason for enhanced outbreak response	Number
New outbreak	16
Large/Ongoing outbreak	7
Complex outbreak	6
Explosive outbreak	1
Total	30

Completed enhanced outbreak response

Home Name	Incident	Tested	+VE	- VE	Not done	% +VE	Of +VE % asymp	Of +VE % carer	Of +VE House Contacts
Home 1	Ongoing	85	10	75	0	12%	30%	80%	1.5
Home 2	Explosive	68	19	49	0	28%	21%	74%	1.6
Home 33	Early	18	0	18	0	0%	NA	NA	NA
Home 4	New	31	16	15	6	52%	0%	88%	NA

Plus

In one care home 38% positive had household contacts who were health or care workers; 1 positive worked in >1 place

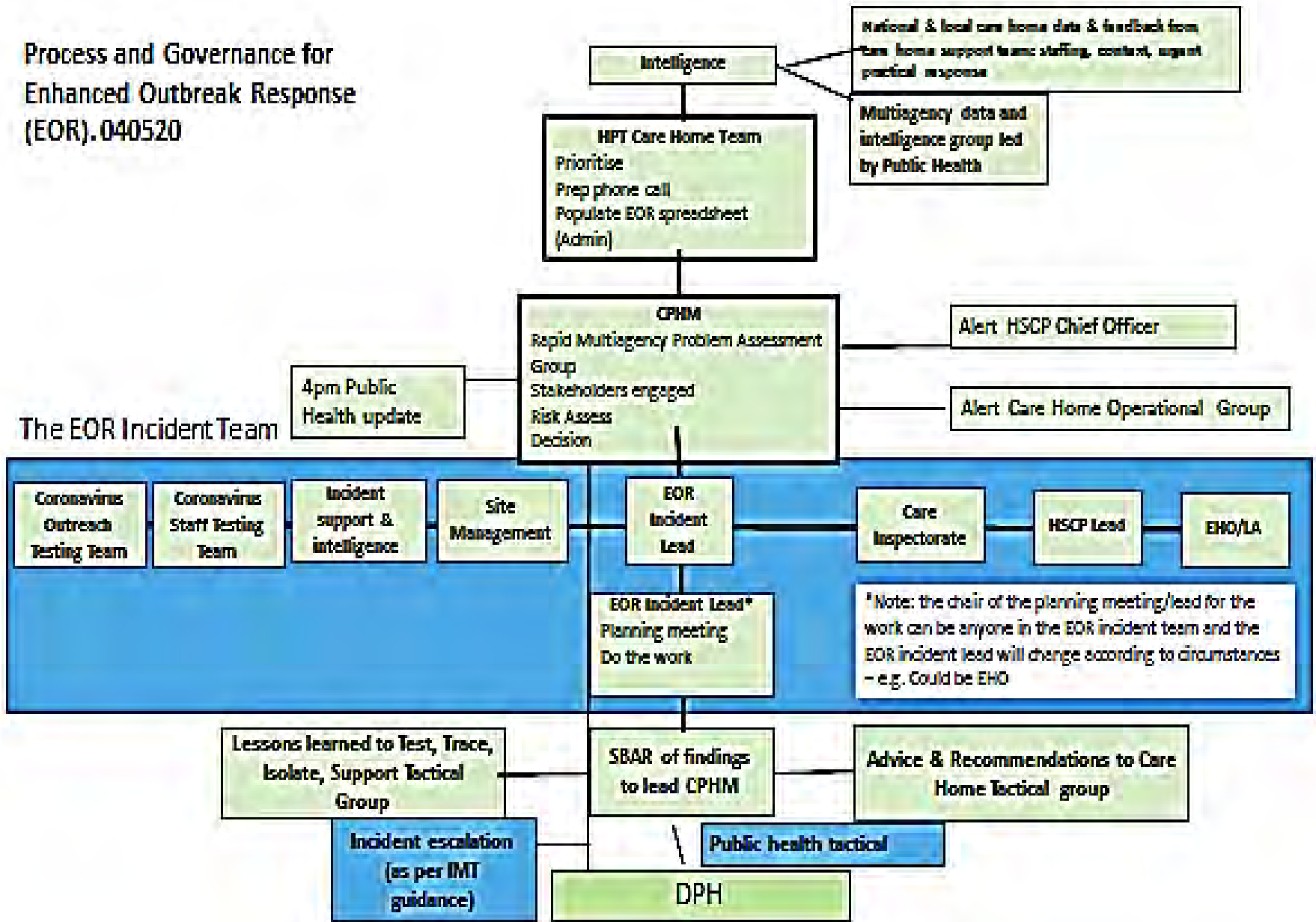
7 Care Homes testing underway

14 pending

2 no testing as controlled, 1 residents only tested

Enhanced Outbreak Response

Process and Governance for Enhanced Outbreak Response (EOR). 040520



Joining up the care home and TTIS guidance: work in progress

Process for HPT
 COVID 19 Enhanced
 Outbreak Response
 (EOR).190520

